

BWE

Blockchain With Environment

October 2022

Raise, Earn, Enjoy! Meta NFT that Shows Aqua Pet

BWE is a blockchain-based game type NFT platform that collects and nurtures NFT with scarcity value. The collected NFT has not only actual scarcity value but also characteristics as a digital art and growing character that can be displayed for ornamental purposes. We hope you enjoy the joy of owning and raising through BWE's digital collection.

White
Paper

CONTENTS

Contents

Part1

BWE

- TEMA of BWE
 - View of the world
 - Market & Popular
 - Introduce of BWE
-

Part2

GAME

- Metaqua
 - Character
 - Nurturing
 - Reward
-

Part3

NFT & Economy

- NFT Marketplace (Exchange)
 - Worldview Expansion
 - DEX
-

Part4

TOKEN

- BWE Token
- Member
- Roadmap
- Conclusion

Part1

BWE

We want to cultivate and grow a sustainable blockchain ecosystem with users who love nature. Starting with the story of BWE, we expect the growth to a scalable industry.

TEMA of BWE

The story of BWE begins from nature. We contain nature, which increasingly grows away from us, in NFT and digital art. The desire of human that owns nature has made huge industries, and even owning rare animals and plants is regarded as having high social status.

BWE's NFT allows users to grow pets and rare plant items with the method raising animals and plants in nature.



View of the World:

Story of River and Sea

Sea is the last bastion of the global environment that has been polluted. Human activities are producing many kinds of pollutants. We have created virtual rivers and seas in a digital environment. We can meet already extinct or endangered fish here. The expectation of getting a wonderful fish with a fancy and unique appearance can excite users.



Story of Forest and Garden

Forests are getting farther away from cities. It is nature where modern people are interested in rare plants. Along this trend, the price of rare plants is rising rapidly and even a newly coined word, plant-tech is being used. We can enjoy the joy of strolling that we can find in the forest through digital items.



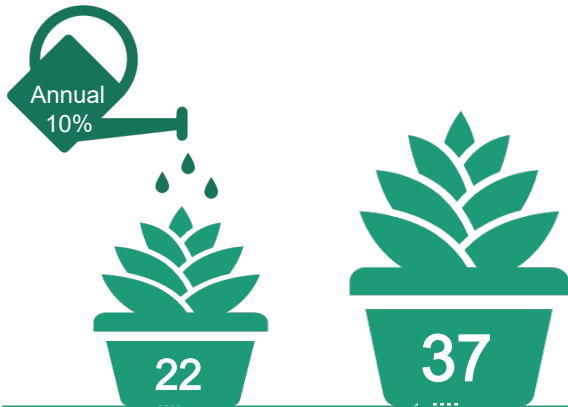
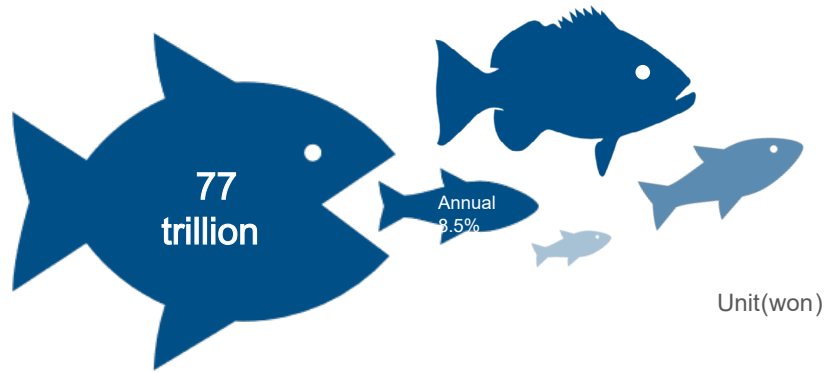
Story of Rare Animal

We pursue harmony in our daily life. Many people are trying to protect endangered animals, and we can only see these animals through photos. We will provide related services to users who want to preserve, raise, and make rare animals an asset after making them into items within metaverse.

Market & Popular

The size of the global aquarium fish industry is estimated at 77 trillion won, and it is increasing by an average of 8.5% annually. More and more people are installing water tanks at home to enjoy attractive fish species or to remove stress .

Source: Hyundai Ocean , Grandview research



Unit (won)

2022

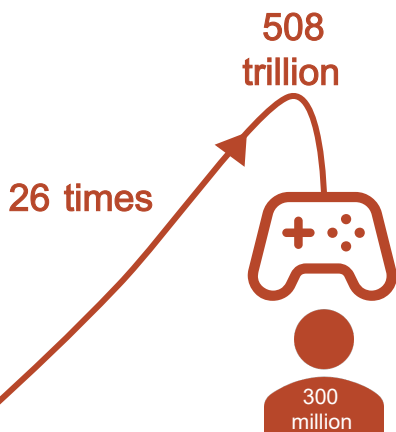
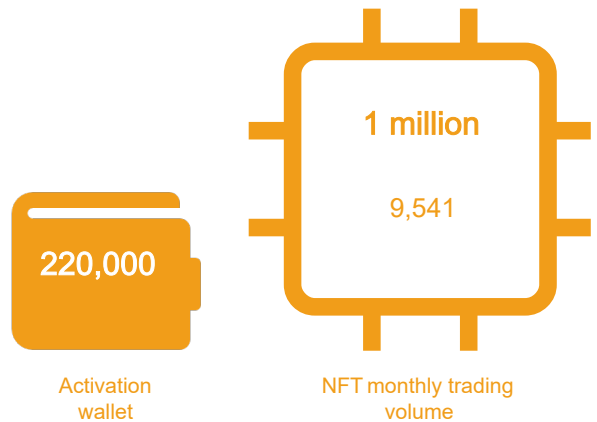
2029

The global pet plant market is estimated to be 22 trillion won , and the home gardening industry has grown by more than 10% as people spend much time at home due to COVID-19 pandemic. The market for ornamental plants will grow to 37 trillion by 2029.

Source : Data bridge

The NFT market has been declining recently . Nevertheless, as of August 2022, the monthly trading volume is 1 million 9,541, and the activation wallet is 220,000 . The NFT market is changing from digital art to game, and a new kind of convergence market is expected.

Source: Yonhap Infomax ([http:// news.einfomax.co.kr](http://news.einfomax.co.kr))



The size of the blockchain (P2E) game market in 2021 is 3 billion dollars. It will account for 20% of the total game market share by 2027 . And the size of the P2E market will reach 508 trillion won by 2027 , so it is expected to grow 26 times as much as that of now. Users will reach 300 million people.

Source: Newzoo, Jangle([https:// xangle.io](https://xangle.io))

Unit (won) 2022

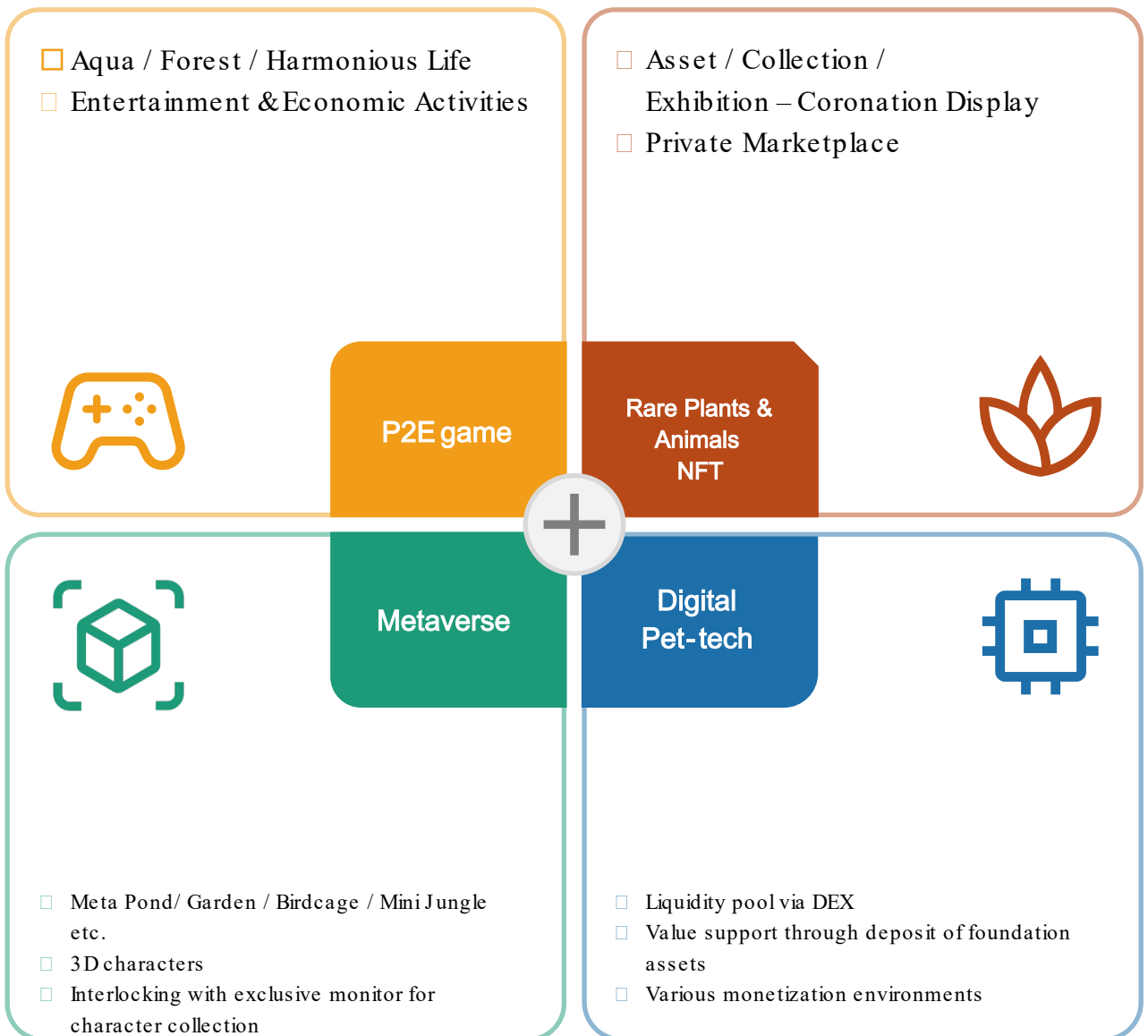
2027

BWE

Blockchain With Environment

BWE is a blockchain project with which you can feel nature and live in harmony with nature while nurturing living things in the water, sky, grasslands, and forests. People possess rare plants and animals for enjoyment or a love of life and furthermore boasting social status.

Get fish, birds, rare plants, and pets through the game and nurture them. Users who seek both pleasure and profit are fascinated with them. And users can add activities that increase the scarcity value by displaying and trading their own characters and NFTs on the metaverse.



Part2

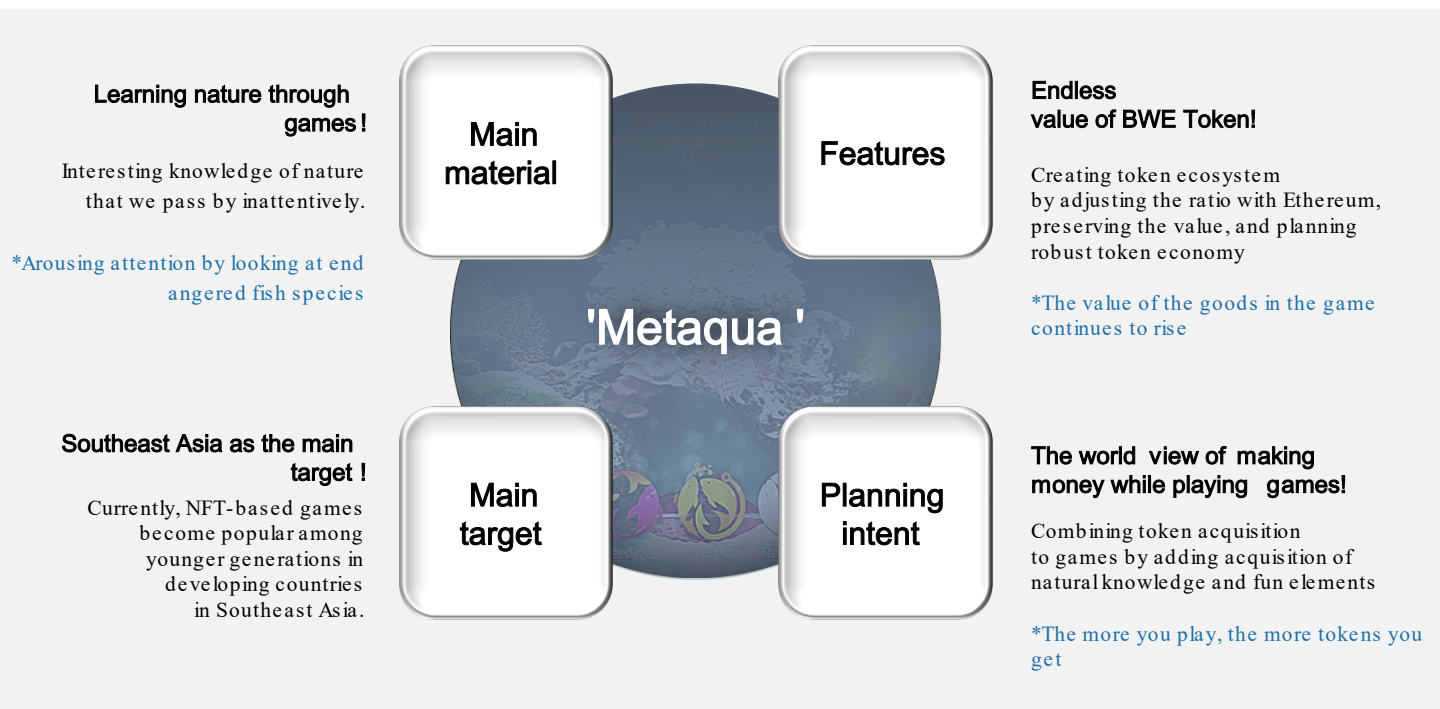
GAME

We introduce the games that the BWE project will release. These games allow users to use both entertainment and economic elements.

Metaqua

Metaqua is a game in which users create ecosystems of rivers and seas by manipulating game environments derived from actual fish habitats.

At first users raise the obtained fish in the aquarium where the basic environment is created, and then build up the environment of the aquarium to be suitable for the fish. Users can expand and diversify the habitat to include several aquariums, ponds, etc.



Getting character

Users release eggs as the start of the project. When users get eggs, they can immediately hatch them in their illustrated animal book. Fish species are provided randomly.

Users can sell the eggs or fish at any time in the store according to the market price. The only way to get fish is to get eggs or buy other users' fish in the store.

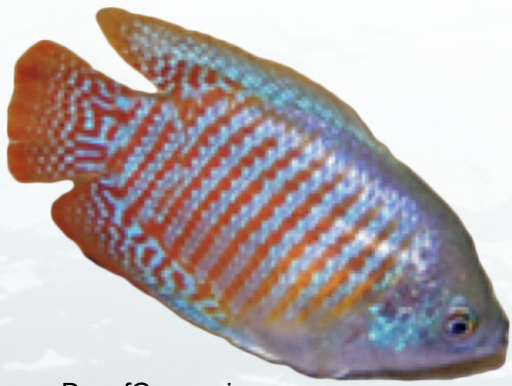
The quantity of eggs is limited by order. At the time of the 1st release, 3,000 eggs are opened. Users who get the eggs through staking can immediately hatch them in the aquarium to check the fish species. Fish grows rapidly when given a tank environment suitable for the species.

Main characters

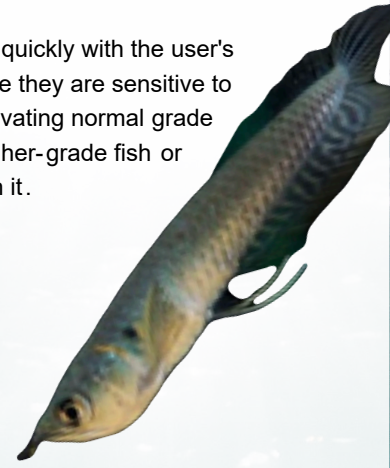
Normal

Metaqua is a feast for various fish . Users can decorate their own aquarium by buying favorite fish . Look around the various fish . At first, 22 fish characters will be revealed. Users can make their own character special in the process of raising fish .

Normal grade fish can grow quickly with the user's interest, but at the same time they are sensitive to the environment . While cultivating normal grade fish, users can acquire a higher-grade fish or challenge rare fish based on it.



DwarfGouramis



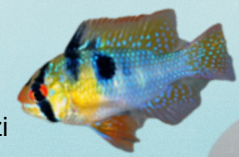
Mini Platinum
Arowana
Mini-PLA



ElectricYellowCichlid



ScalareAngel



Ramirezi



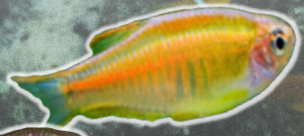
BlackPhantomTetra



BlueKenyi



Convictcichlid



GlowlightDanio



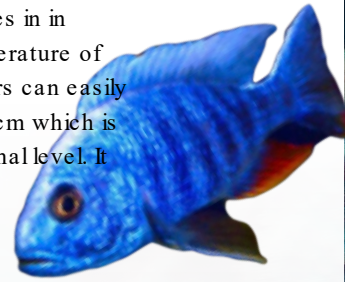
BuenosAiresTetra

Common



Discus TigerTurquoise

The average lifespan of common grade fish is 10-11 days. The water temperature and quality that fish prefers are the same as those of the place of origin. Discus TigerTurquoise mainly lives in in South America and prefers water temperature of 28 to 30°C. Since it is omnivorous, users can easily distinguish the food. It grows up to 20 cm which is the size that we can not see in the normal level. It is the 2nd largest fish in common level.



Blue Ahli



Oscar



Zebra Otocinclus



Altum Angelfish



Greenterror

Rear



Silver Arowana

The average lifespan of rare level fish is about 50 days. It has a long lifespan and excellent adaptability to the environment. It has also a very big size of 90 cm, so a wide water tank and pond will be required. It feeds on other fish rather than aquatic plants. If you can supply a lot of food for it, it will have a beautiful appearance and high product value.



Discus Pigeon Blood

Epic

Unique characteristic is given to the fish of Epic stage. It has various lifespan and preference environments, and special features and benefits are granted, so you can take advantage of them. Legendary and additional characters will be revealed on the homepage.

Asian Arowana



Discus Red Moon



Nurturing

A basic water tank is given to all users. Take care of your favorite fish here. Every day, users can receive reward from healthy fish. This means that nature gives us the value of happiness and coexistence. We hope that users protect and improve food and the environment of the water tank or pond using the rewards. When you provide fish with good food, it will grow quickly, which gives you the opportunity to progress to a better grade.

Getting Reward

Normal grade fish gives an average of 1~2 points per 10 minutes. Common grade fish gives 5~7 points, and rare grade fish can give you over 25~30 points. Higher-grade fish can bring you more rewards.

It is important to raise a lot of fish. Please design the optimal rewards with feeding, aquarium utilization, management tools, events, ranking, etc.

Management Tool

Aquarium is an important place to raise fish. Managing well aquarium is the key to raising fish. Deck registers and manages fish. If you use illustrated book, aquarium illustrated book, and collection well, you can get a combination that maximizes the rewards. Items are required for rapid growth and reproduction. Item types are as follows.

The important strategy in the early period is to obtain rewards and utilize resources. It is important for users to choose carefully whether they buy items and fish with rewards or monetize their rewards by exchanging them. Management tools help to maximize and facilitate this.

Food	Aquatic plants (Aquatic plants are provided naturally to each aquarium. You can buy additional plants when they are insufficient) Automatic feeding machine (Aquarium installing it automatically feeds)
Aquarium Environment	Filter (The water quality of aquarium installing it does not deteriorate) Heater (Temperature can be raised. It can only be set upwards based on 24°C) Cooler (It can lower the temperature. It can only be set below 24°C) Alnus firma fruit (Each fruit lowers 0.1 PH of the basic reset) Bone coral(Each coral increases 0.1 PH of the basic reset)
Pill	Medicine (Treatment of fish with disease) Growth accelerator 60M (Shortening 60 minutes of the growth time of fish) Breeding accelerator 60M (Shortening 60 minutes of the breeding waiting time of fish)



Events & Quests

Don't forget that an additional Egg Release opens with each new fish release. Various events and quests are important opportunities for new users as well as existing users. If you are a user who want to get more rewards, take advantage of the daily and weekly quest achievements. Quests give you opportunities to acquire more points and items.



Rank Management

We provide reward for each rank considering daily, weekly, and monthly rankings. The fish included in the ranking is limited to the fish that live in the aquarium. The fish placed in some Deck is excluded from the ranking to utilize special functions and rewards. You should keep it in mind when using special functions. If the environment of the aquarium is bad, the reward calculation will be slow. This also badly influences the rankings.



Strategy for Adult Fish

Breeding and bringing together are options for moving up to the next level. It is required to perform reproduction to possess many fish. If there is enough space in the aquarium, it indicates that the breeding season arrives. You can drag the male and female fish and then complete the breeding. You can see that the fry are born immediately after breeding.

Bringing together different level of fish in the same aquarium has the risk of losing fish. However, it is the providence of the ecosystem for high-grade fish to catch and eat low-grade fish. High-grade fish can resolve their hunger and it becomes a chance of breeding special fish.

Synthesis is a shortcut to select when there are too many same level fish. There is a chance to get a higher level of fish through synthesis. The choice is up to the users. If you got a rare fish through synthesis, please select NFT minting. It will be a good way to protect your assets. In the case of the fish created through synthesis, NFT can be issued regardless of the step. However, you need to consider the benefit compared to the gas fee.

The best strategy is to find the right balance between mature adult fish number and high-grade fish number.

Aquarium

Aquarium is a space where users can display their fish to everyone . Users can attract tourists by opening their aquarium . You can show off your fish and even boast your achievements and growth strategies widely .

Pond

Pond is a space for growing adult fish , and it can be a good solution for users managing a large number of water tanks at the same time . You can expand the pond as much as you want in quantity, width, and height . Unlike the water tank, customized decorations and decorating tools are provided, you can make a variety of designs . In addition, it can accommodate more kinds of fish than in the water tank , and the pond is a good choice for raising a lot of fish and maintaining P2E.

Additional games

The BWEproject will continue to introduce characters and games that provides new nurturing methods . You can trade items and characters not only in the store within the game but also in the BWEmarketplace . Our own DEX and listed exchanges provide liquidity for BWE tokens that you get as rewards.



Part3

NFT & Economy

☰ System for User Economy

NFT marketplace and DEX are major infrastructures that support the economy for users and by users. Users can continue to perform their activities for mutual trading and monetization by utilizing them.

We made an ecosystem where economic activity between users is the center, rather than just buying something through a platform. We introduce policies to protect the rights and profitability of all users participating in P2E. These user's activities are connected to acquisition of tokens. We adopt the ideology of blockchain technology and web 3.0 to protect the value of tokens and NFT and create a user-centered environment.

🏪 NFT Marketplace (Exchange)

Users can trade all multi-games NFTs in the BWE marketplace. All characters in the game are issued as a NFT and can be traded according to the market price. It is expected that buyers compete to acquire higher level characters which are limited in quantity.

Marketplace is different from store that can only trade the game items in the game. Fish can be also sold in the form of trade between users in the store. There is no gas fee for a trade within the store.

We provide an opportunity for users to get special units when synthesizing them after getting NFTs of other games in the marketplace. These rare NFTs have not only collectible and use values but also various special functions and appearances.

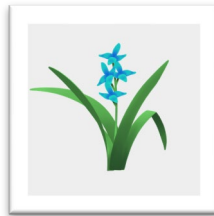
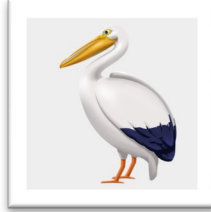




Expansion of worldview

We expand the story of the game and NFTs all over the world . And we will satisfy users who want to realize an earth -like environment in the game .

This expansion of universe will provide NFT collectors with a more special collection opportunity . When we release the cross-synthesis function between NFTs soon, users can own and nurture creatures such as ligers, sperm whales, and Dodo birds that we do not easily encounter in nature . Game players can move between more various P2Es, and they will be satisfied with both profit and leisure .

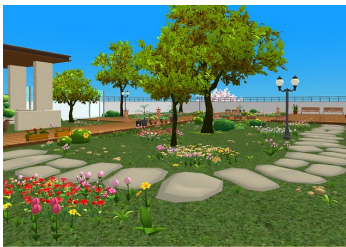


We can call the characters that we nurture into virtual reality through a realistic metaverse realization. You can interact with rare animals and pets and display them in various ways in this space. In addition, you can decorate your own garden, pond house, etc., and realize a nature-friendly life in this space.



Pond

Make your own pond with water plants and stones. We will also release natural spring for the flow of water, waterway, watermill waterfalls, etc.



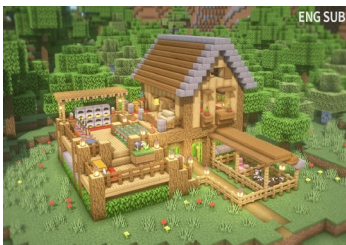
Garden

If you develop the virtual space that BWE provides, you can create your meadow as well as your own forest and garden.



Mini jungle

Create thick foliage plants, towering tropical plants, and yards and shelter for pets.



Wild house

You can realize not only a space for characters, but also virtual shelters and play space for users and their families in the metaverse. You can arrange walls, railings, stairs, and windows in various ways.

Display Support

You can display the rare items that you decorate through the dedicated monitor . Rare animal and plant characters move like real animals and plants and boast their colorful and cute appearance . When the display device is connected, you can make an aquarium with your fish.

Dedicated Display Example



NFT Ranking

Users continue to do ranking competition even in the expanded worldview . Compete with champions and get higher rewards.

Premier League

Those who possess super rare characters and items are invited to a new league . Battles and competitions are conducted in a new way in this league .

Premier Benefit

The benefits that super rare characters provide include more than points . You can get event products in real life and have the opportunity to participate in various offline events . You can participate in various promotions such as world tours through the events . You can also get benefits from the activities for the planet and nature.

Part4 TOKEN

We introduce BWE token usage and value activities.


BWE token

Token information **100,000,000,000**

Token Name	Blockchain With Environment
Ticker(Abbreviation)	BWE
Chain Type	ERG-20 platform
Purpose of Issuance	
Games, NFT Ecosystem Rewards, and Transactions	
Where to use	
Marketplace , Wallet, DEX, and listed exchange Exchanging for points within the gaming platform	

Token Distribution

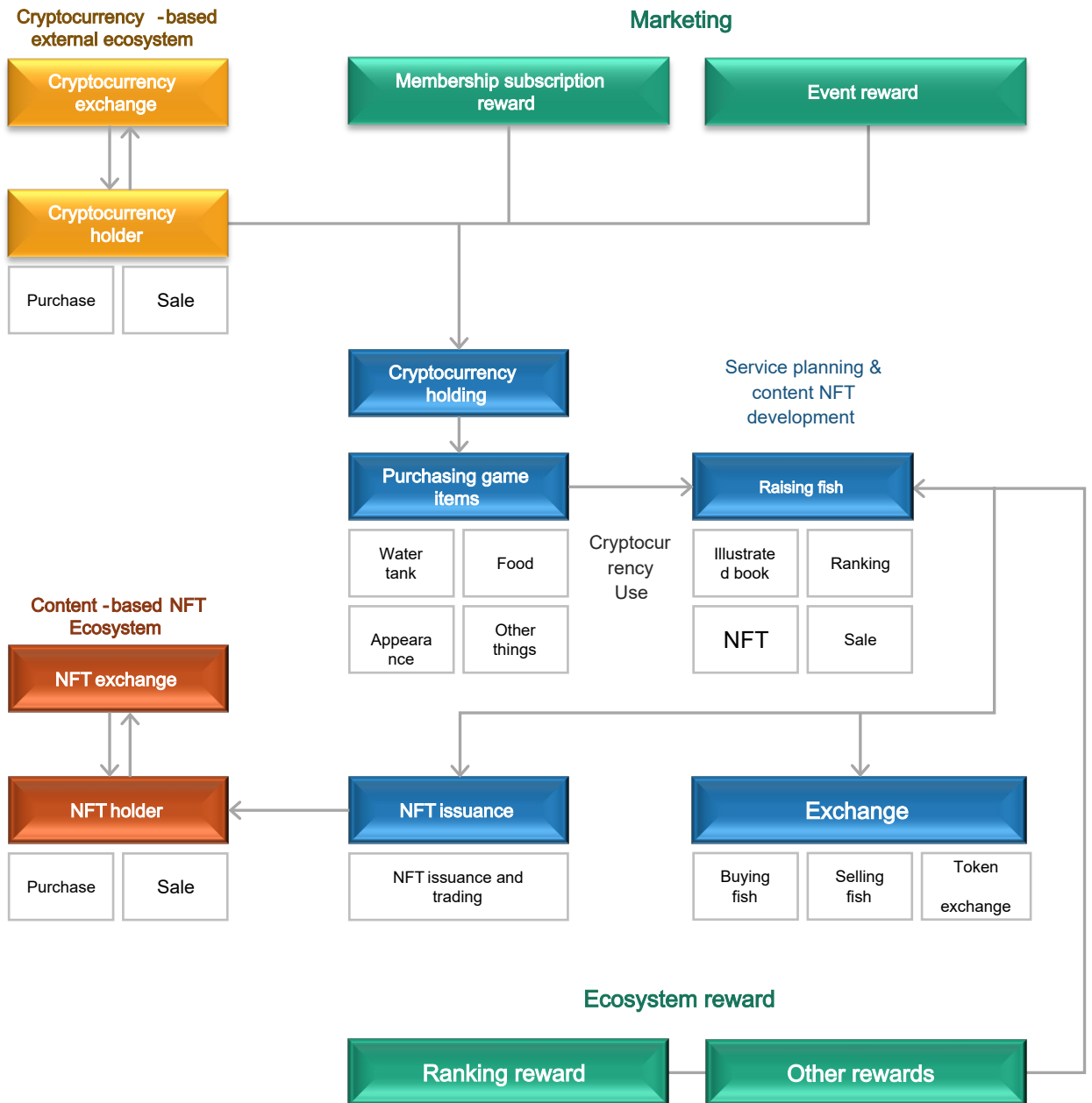
Division	Issuance rate	Issuance amount	Note
Token sale	10%	10,000,000,000	In-game sales
Founder & Team & Advisors	10%	10,000,000,000	Lock-up
Strategic Partners	10%	10,000,000,000	Lock-up
Marketing	10%	10,000,000,000	
Reservers	10%	10,000,000,000	Company holdings
Ecosystem	50%	50,000,000,000	Inflation
Sum	100%	100,000,000,000	



Division	Allocation (Billions)
Ecosystem	50
Reservers	10
Marketing	10
Strategic Partners	10
Team	10
Token sale	10

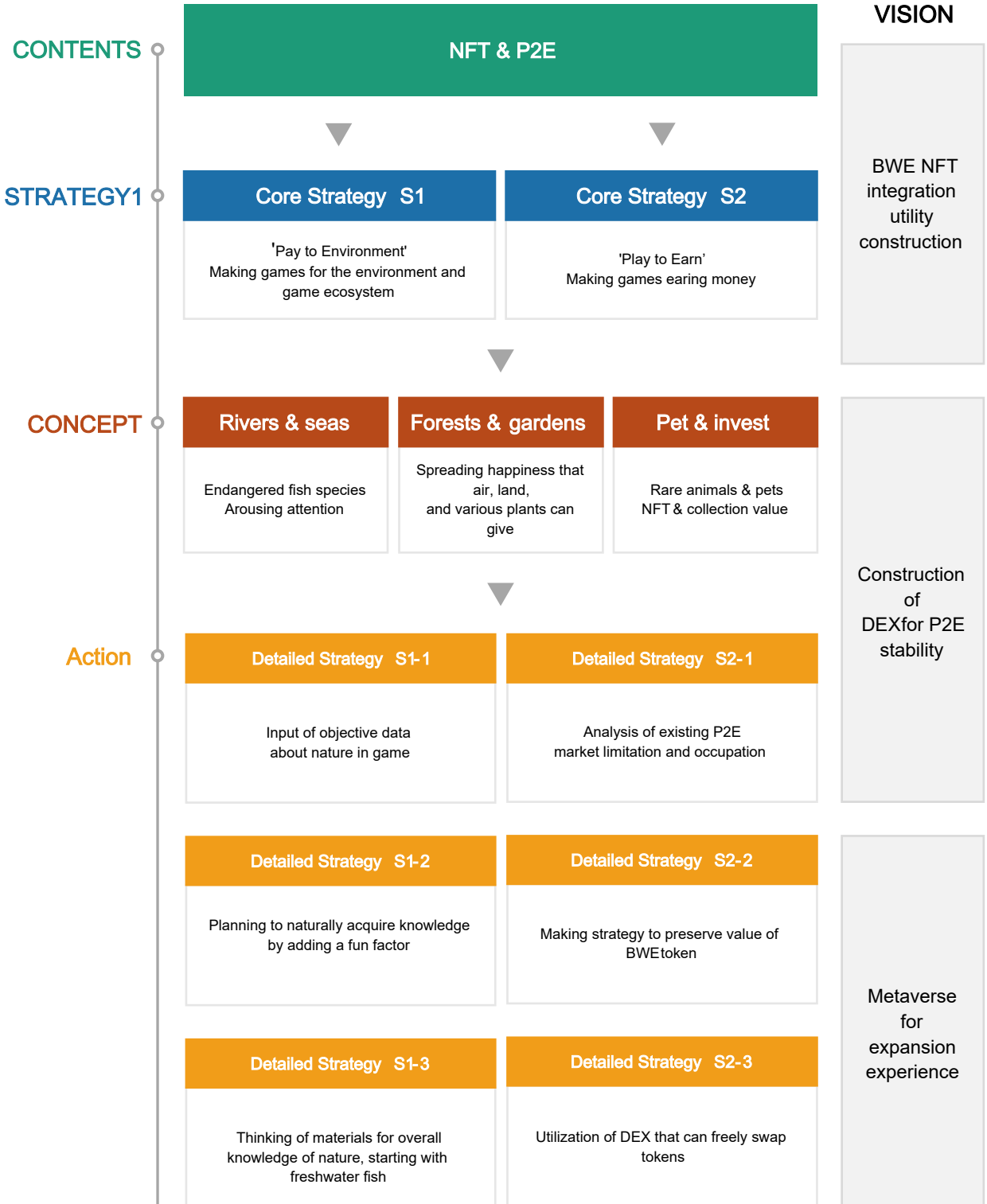
Token Economy

The BWEtoken has an exchange value with the affiliated cryptocurrency (Ethereum). It is used in the game and is structured so that participants can earn profit through various types of contribution . You can get various profits by actively participating in the game .



Token value support model according to business growth

We specify in our company bylaws that a certain amount of business sales must be deposited on the DEX exchange. If you are a token holder, you can see in real time that the deposit amount increases in proportion to BWE's revenue and token circulation amount. We will try our best to achieve our goal according to a clear growth strategy .

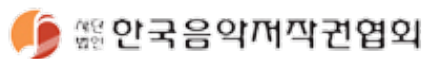


Members

<p>CEO Chung -seok Han</p>	<p>COO Aiden</p>	<p>CTO David Yim</p>	<p>CMO Jakob</p>
<p>Ph.D., Seoul National University of Science and Technology ,Blockchain Master of Business Administration, Yonsei University Bachelor / Master of Electronic Engineering, Hanyang University T-Commerce Vice President of Business Woonam&Partners Global Marketing Vice President EGISTECH(Taiwan) Korea Branch Manager FPC (Sweden) Sales Marketing Director Ericsson/ST-Ericsson</p>	<p>Sinkweb COO blockchain marketing & consulting 20+ Projects Bitget futures trading contest individual 1st Place, team 2nd Place (2021,6)</p>	<p>Upbit Executive Director Coinbit Business Division CEO Director of Biki Korean Branch Head of Korean branch of LD Capital in China</p>	<p>Bithumb Korea Manager Rootonesoft Manager Bytex CMO Equitiage Executive Director</p>
<p>DEV Michael</p>	<p>DEV Gordon</p>	<p>DEV Isaac</p>	
<p>Neowiz Chronos Business Team EYEDENTITY Games DragonNest Global Business Team</p>	<p>Netmarble Balance Planning ENP GAMEBusiness General Management AIOBC cryptocurrency affiliate payment terminal application development and server construction</p>	<p>Nexon Korea/Land of the Winds:Yeon Raonsecure Blockchain Development Saltlux AI Development</p>	

Partners

The BWEproject aims to become a stepping stone and a cornerstone to spread Korea's NFT potential to the world . We will achieve a greater vision by cooperating with excellent domestic and foreign partners .



2023 Global launching	'Metaqua' Global launching 1st and 2nd updates & second project 'Tree' game development, BWE token mainnet development and mainnet test start	1/4	P2E development requirements design, start of DEX development
		2/4	Start of BWE project task force and staff expansion
		3/4	Metaqua beta open. Adoption of NFT protocol. White paper planning
		4/4	Open of white paper and homepage 1st listing of BWE Token
2024 BWE coin listed on major exchanges	Year-round mainnet testing and development completion 3rd update of 'Metaqua' 'Tree' game planning and development completion and global launching Listing review and listing of BWE Token	1/4	Nth listing of BWE Token Additional character open
		2/4	NFT Marketplace launching Mainnet test completion
		3/4	Metaqua update Mainnet open
		4/4	DEX launching New game launching
2025 BWE mainnet - based NFT release	ETH-based trading system Change to BWE tokens BWE mainnet-based NFT issuance 'Tree' game 1st and 2nd update 3rd project 'Animals' game development preparation	1/4	New game (Tree) 1st update Mainnet-based NFT issuance
		2/4	Dedicated NFT staking service start Open of NFT breeding + cross-use between games
		3/4	NFT new grade open Character NFT dedicated display sales start
		4/4	New game (animals) design NFT legend-level dedicated exhibition hall open
2030 BWE-based MMORPG development	Game ecosystem completion (River-Sea-Forest-Meadow-Garden- Cage-House) MMORPG launching		10 kinds of game release MMORPG pre-release (characters & story) Ranking start for only super rare NFT holders Global festival held

Conclusion

We are advancing toward a wonderful world . BWEchanges the way we experience this wonderful world . Perform economic activities through NFT, enjoy leisure through games, and observe and learn the natural environment through the process of developing each character .

We are going to introduce sequentially dedicated wallet , market, listing, and additional games. These are intersected and integrated for the value of economy . Users do not belong to the platform and have independence of the economy based on blockchain. The BWE's foundation and development team will do their best to support this .



Disclaimer

Please read the following disclaimer carefully. The following things are applied to everyone who reads this white paper. The White Paper of BWE Token (hereinafter referred to as “white paper”) is written and provided based on the time of writing. Any content included in the white paper can be changed or updated at any time at the BWE Corporation team's discretion and it does not guarantee that any content in this white paper will not change in the future. If there is any doubt about the contents of this white paper, you must consult with accountants, lawyers or other experts before purchasing it.

1. The purpose of this white paper is to provide summarized information and introduction to the BWE Corporation prepared by the BWE Corporation team. This white paper does not have legal binding force on the BWE Corporation or the BWE Corporation team, and any phrase contained in the white paper does not have the nature of subscription, purchasing, investment proposal, and investment coercion. In addition, this white paper does not guarantee the applicability of laws such as the Financial Capital Act and Personal Information Protection Act.
2. All the information or analysis in this white paper cannot be used as a basis for investment decisions. We inform you that it is not an investment proposal or advice of any kind. We also inform you that any content or data with a forward-looking nature in this white paper may change for any reason and can not be accurate, and there is no guarantee or promise regarding the content.
3. The BWE Corporation team, including directors, agents, employees, contractors, and sales partners, is not responsible for all kinds of damages that may occur directly or indirectly according to the following information included in this document: (1) Accuracy and completeness of the contents of the contract according to the white paper; (2) Error or omission of the white paper; (3) Impossible to view white paper due to unidentified causes; (4) All other damages caused by the use of white paper or not use. In addition, the BWE Corporation team shall not be responsible for the following items that may occur according to the decision-making using the information included in this document when a preliminary warning is given or the damages are predictable: (1) Monetary damages of profits, revenue, liabilities and other types; (2) Income, sales, capital reduction, debt or other losses from business transactions, business activities, and operating profit related activities; (3) Data loss or damage; (4) Incidental or special damages; (5) Wasted or lost management time; (6) Indirect or inevitable damages.
4. The contents of the white paper may change depending on the contents of the ongoing BWE Corporation project, the market change, the technology development, the ICO, and the change of token regulations. However, the BWE Corporation team inform you that it has no obligation to inform or report to the readers about the events, platform, future plans, estimates, and changes within the error range.

Disclaimer

5. In this white paper, information on areas such as law, tax, regulation, finance, and accounting is not an advice. The purchase of BWE Token can result in material losses to the buyers, including material assets paid for the purchase of BWE Token. We recommend that buyers consult with experts such as tax, regulation, finance, and law about potential risks, profits, and results that can be caused by the transactions of BWE Token before buying BWE Token.

6. It is entirely the responsibility of the BWE Token buyer to determine the legality of other taxation and overseas currency exchange, including income taxes that may be caused by the acquisition and disposal of BWE Token within their legal jurisdiction.

7. Publication and distribution of this white paper is prohibited in a country where publication and distribution of this white paper is prohibited. The information in this white paper does not receive any verification or approval from any regulatory agency, and any behavior that violates law is not effective for the BWE Corporation team. The publication and distribution of this white paper does not guarantee that all regulations of the country in which it was issued have been complied with.

8. The official material for the BWE Corporation is this white paper, and it is written in English. This white paper can be translated into other languages and can be used for oral or written communication with both prospective and existing buyers, and in this process, some information may be misunderstood, misinterpreted, or lost. Therefore, please note that we cannot guarantee the accuracy of these alternative communications. When there occurs such inaccurate communication, the information in this official white paper written in English shall prevail.

9. All the contents of this white paper are protected by copyright. It is possible to download or print individual sections of this white paper only for personal use or for other proprietary notices. This white paper can not be reproduced, in whole or in part, by electronic means or otherwise, or modified, linked, or used for public or commercial purposes without the prior written consent of the BWE Corporation team.

Investment Risk

The BWE Corporation team informs the buyers of several types of risks, including the risk of losing a substantial amount of the purchase price of BWE Tokens. We don't guarantee the accuracy of the information regarding the risks or uncertainties written below. The buyers are considered to agree to purchase BWE Tokens, being aware of the risks and burdens as it is, expressly and without warranty of any kind, by buying and selling BWE Tokens.

1. **Blockchain risk:** Transactions may be processed late or invalidated due to congestion in the blockchain system. In particular, the smart contract responsible for the issuance and distribution of BWE Token is based on the Ethereum blockchain. The Ethereum protocol may have weaknesses and vulnerabilities, and various bugs may occur, including a bug that can cause BWE Token loss. In addition, these problems of the Ethereum blockchain may result in material damage to the BWE Corporation team and BWE Token buyers.
2. **Personal information risk:** User's personal information is used for the distribution and control of BWE Tokens in the buyer's electronic wallet. Therefore, when personal information is leaked, BWE Tokens in the buyer's electronic wallet may be leaked. Moreover, the leakage of the buyer's personal information may allow a third person to access the buyer's electronic wallet and steal BWE Tokens.
3. **Security risk:** Like all other cryptocurrencies, Ethereum is vulnerable to mining attacks such as 'Double Spending Attack' or '51% Attack'. Hackers or groups with other malicious intentions can attack the BWE Corporation team or BWE Token with the above attack method. If these blockchain attacks are successful, they can give a great deal of damage to BWE Token and BWE Token transactions.
4. **Electronic wallet compatibility risk:** You must use an electronic wallet that is technically compatible with BWE Token in order to purchase or store BWE Tokens. If you use other wallets, you cannot access and view the BWE Token that you buy.
5. **Force majeure risk:** BWE Corporation is still under development and the BWE Corporation team will try to develop and maintain BWE Corporation as written in the white paper, but there may be change in the details for various reasons including laws, design, technology, administrative regulations, etc. When drop of BWE Token value, losses, and liquidity losses occurs due to unavoidable factors including regulatory frame, required permission, license, change of taxation policy, appearance of a platform or open source that has a disadvantage in the BWE Corporation team or BWE Corporation, lack of interest in the market, and other similar situations, the BWE Corporation Team is exempted from the liability of it. In particular, in the case of the regulation specified in this white paper, such as the Anti-Money Laundering Law and the Personal Information Protection Act, there may be changes in the interpretation or regulation itself of administrative agencies that regulate the regulation. There may be different views on the interpretation of the current white paper. The BWE Corporation project can be flexibly changed to meet regulatory changes. And the content of this white paper can be changed on the basis of judgment of BWE Corporation.